



**REGIONAL SPECIALISED METEOROLOGICAL CENTRE-TROPICAL CYCLONES, NEW DELHI  
TROPICAL WEATHER OUTLOOK**

**DEMS-RSMC TROPICAL CYCLONES NEW DELHI DATED 06.11.2023**

**TROPICAL WEATHER OUTLOOK FOR NORTH INDIAN OCEAN (THE BAY OF BENGAL AND THE ARABIAN SEA) VALID FOR NEXT 168 HOURS ISSUED AT 0600 UTC OF 06.11.2023 BASED ON 0300 UTC OF 06.11.2023.**

**BAY OF BENGAL:**

SCATTERED LOW AND MEDIUM CLOUDS WITH EMBEDDED INTENSE TO VERY INTENSE CONVECTION LAY OVER WESTCENTRAL BAY OF BENGAL OFF SOUTH ANDHRA PRADESH COAST. SCATTERED LOW AND MEDIUM CLOUDS WITH EMBEDDED MODERATE TO INTENSE CONVECTION LAY OVER SOUTH BAY OF BENGAL & ANDAMAN SEA AND ISOLATED WEAK TO MODERATE CONVECTION LAY OVER NORTH BAY OF BENGAL.

**PROBABILITY OF CYCLOGENESIS (FORMATION OF DEPRESSION) DURING NEXT 168 HRS:**

24 HOURS	24-48 HOURS	48-72 HOURS	72-96 HOURS	96-120 HOURS	120-144 HOURS	144-168 HOURS
NIL	NIL	NIL	NIL	NIL	NIL	NIL

**ARABIAN SEA:**

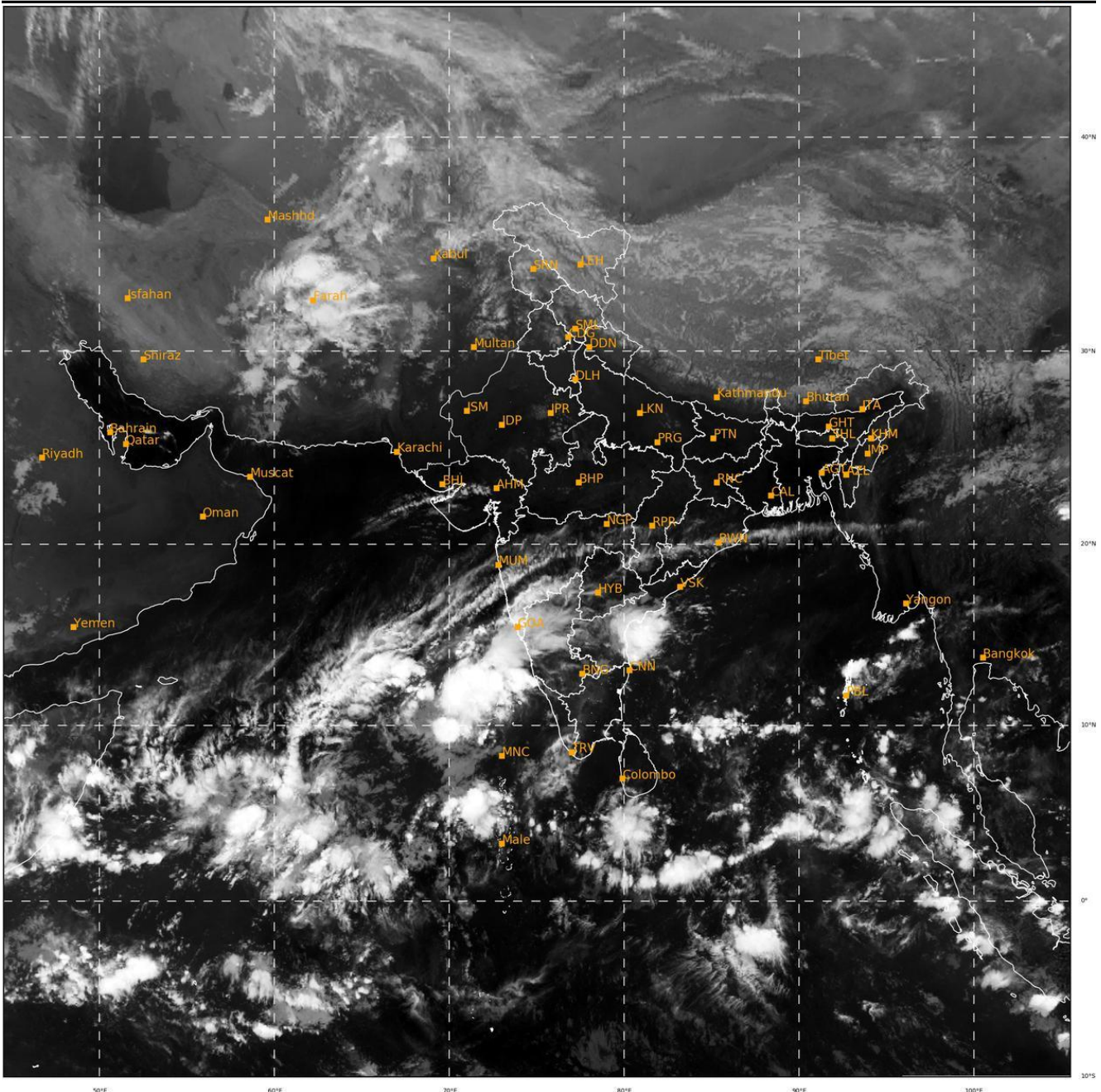
YESTERDAY'S CYCLONIC CIRCULATION OVER NORTH TAMIL NADU & NEIGHBOURHOOD NOW LIES OVER SOUTHEAST ARABIAN SEA OFF KERALA COAST AT 0300 UTC OF TODAY, THE 6<sup>TH</sup> NOVEMBER 2023 BETWEEN 3.1 & 5.8 KM ABOVE MEAN SEA LEVEL. IT IS LIKELY TO MOVE WEST-NORTHWESTWARDS AND UNDER ITS INFLUENCE, A LOW PRESSURE AREA IS LIKELY TO FORM OVER EASTCENTRAL ARABIAN SEA AROUND 08<sup>TH</sup> NOVEMBER, 2023.

SCATTERED TO BROKEN LOW AND MEDIUM CLOUDS WITH EMBEDDED INTENSE TO VERY INTENSE CONVECTION LAY OVER EASTCENTRAL & SOUTH ARABIAN SEA AND LAKSHADWEEP ISLANDS AREA. SCATTERED LOW AND MEDIUM CLOUDS WITH EMBEDDED MODERATE TO INTENSE CONVENTION OVER SOUTH PARTS OF WESTCENTRAL ARABIAN SEA COMORIN AREA AND ISOLATED WEAK TO MODERATE CONVECTION LAY OVER NORTHEAST ARABIAN SEA AND GULF OF KUTCH.

**PROBABILITY OF CYCLOGENESIS (FORMATION OF DEPRESSION) DURING NEXT 168 HRS:**

24 HOURS	24-48 HOURS	48-72 HOURS	72-96 HOURS	96-120 HOURS	120-144 HOURS	144-168 HOURS
NIL	NIL	NIL	NIL	NIL	NIL	NIL

**Remarks:** NIL



523

931

IMD, DELHI

Cloud distribution: (a) Isolated: <25%, Scattered:25-50%, Broken: 51-75%, Solid:>75%, Convection Intensity: (a) Weak: Cloud Top Temperature (CTT) >-25°C, (b) Moderate: CTT: - 25°C to -40°C, (c) Intense: CTT: - 41°C to -70°C and (d) Very Intense: : Less than -70°C  
PROBABILITY OF CYCLOGENESIS (FORMATION OF DEPRESSION):NIL: 0%, LOW: 1-33%, , MODERATE: 34-66% AND HIGH: 67-100%  
This is a guidance Bulletin for WMO/ESCAP Panel Member countries. Visit respective National websites for Country specific Bulletins